

Input DLIS Files

DEFAULT	Splice_TLD_MCFL_CNL_029CUP	FN:1	PRODUCER	14-Mar-2008 10:19	907.1 M	55.4 M
---------	----------------------------	------	----------	-------------------	---------	--------

Output DLIS Files

DEFAULT	TLD_MCFL_CNL_HRLA_032PUP	FN:52	PRODUCER	14-Mar-2008 11:32	272.0 M	125.7 M
REDUCED_DLIS	TLD_MCFL_CNL_HRLA_032PUP	FN:53	PRODUCER	14-Mar-2008 11:32	272.0 M	125.7 M

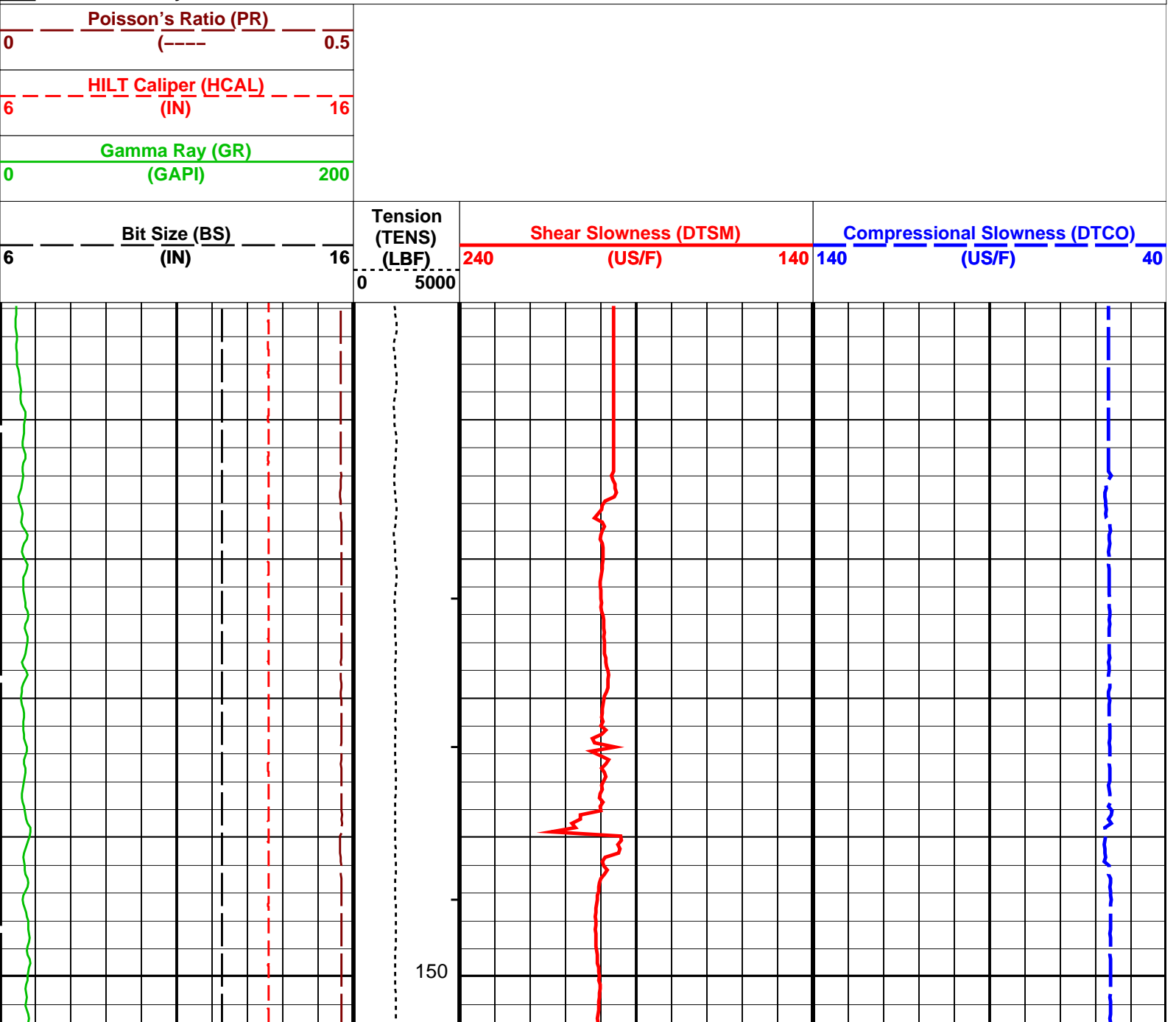
OP System Version: 15C0-309 MCM

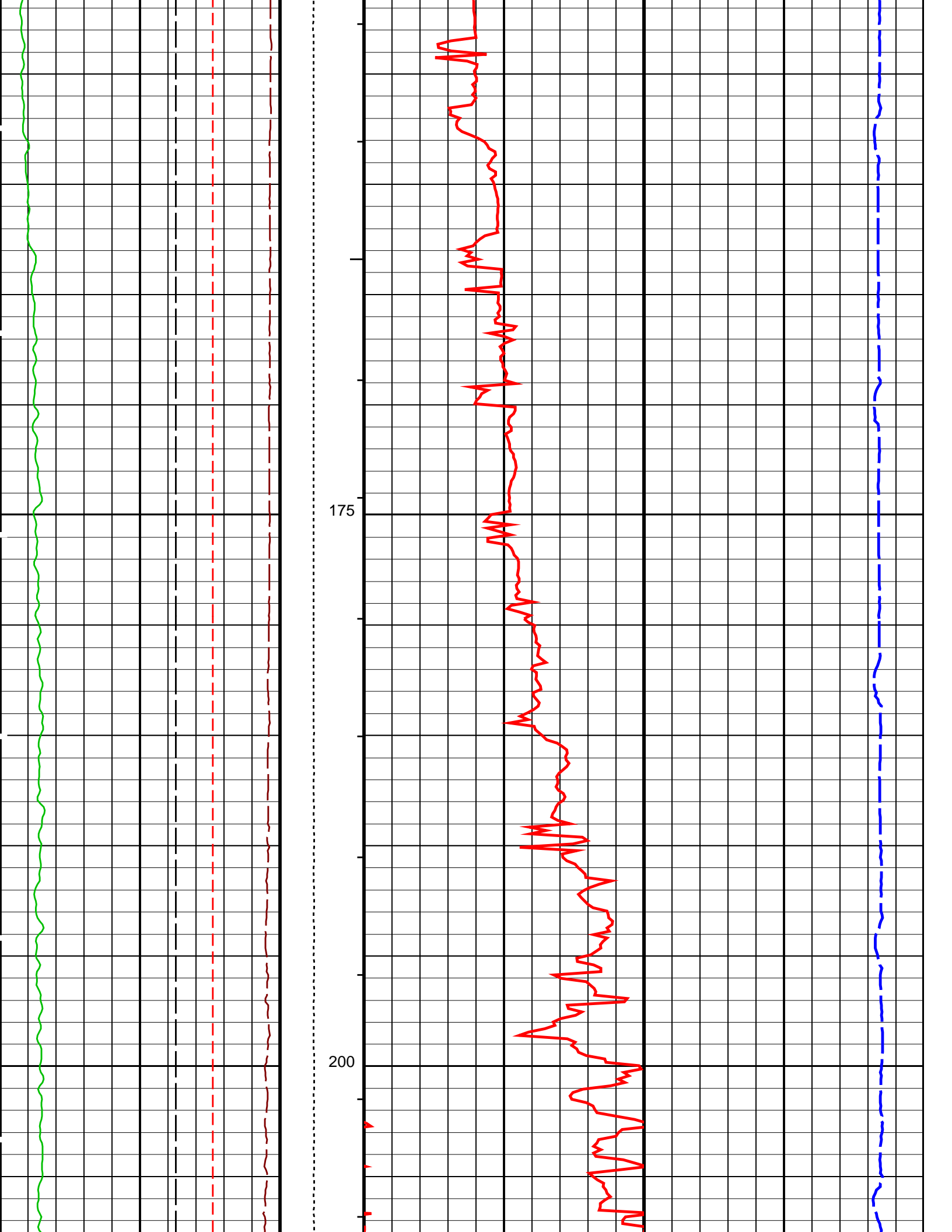
HILTB-FTB	SRPC-3546-Q1_2008_OP15	HRLT-B	SRPC-3546-Q1_2008_OP15
PPC1-B	SRPC-3546-Q1_2008_OP15	MAXS-B	SKK-3442-MAST
MAPC-B	SKK-3442-MAST	EDTC-B	SKK-3493-EDTCB
BSP-AH-169	SRPC-3546-Q1_2008_OP15		

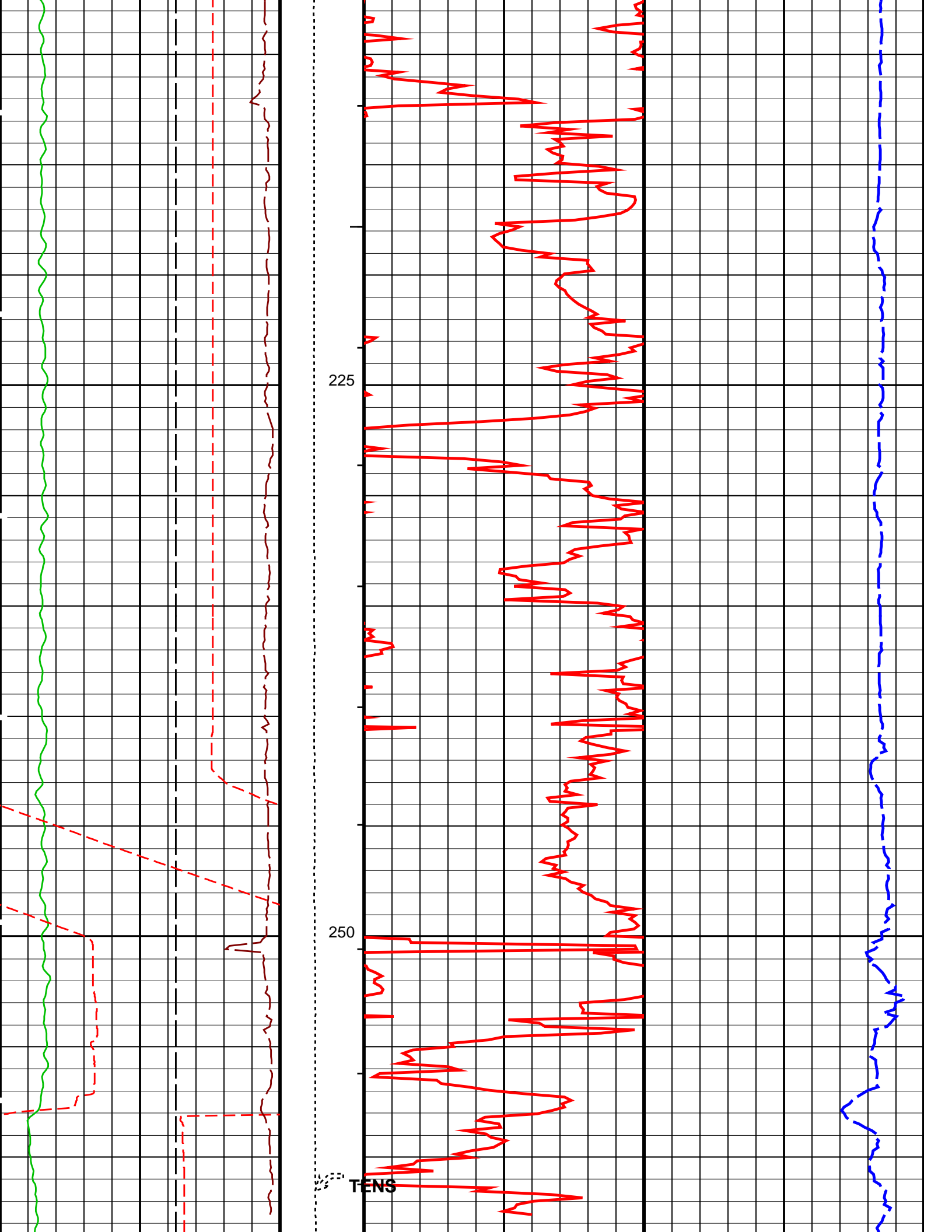
PIP SUMMARY

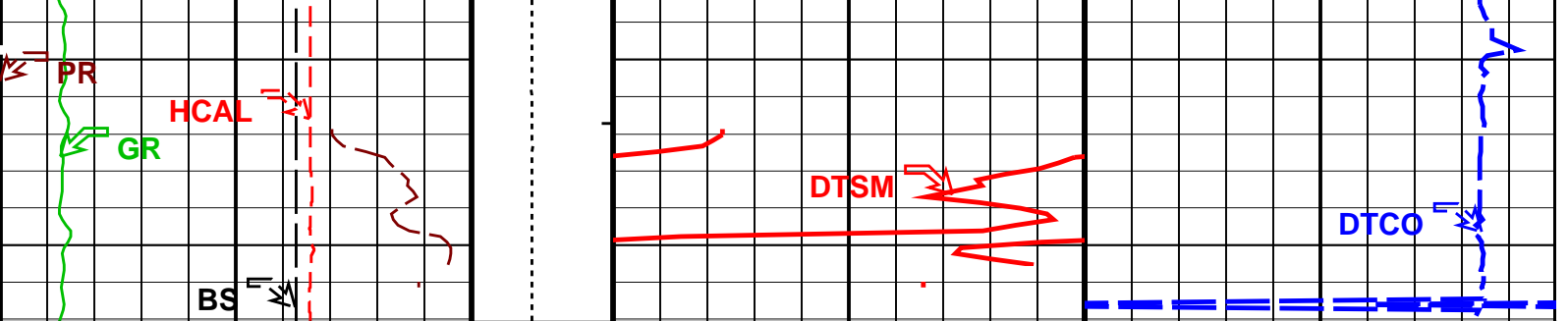
↓ Integrated Transit Time Minor Pip Every 1 MS
 → Integrated Transit Time Major Pip Every 10 MS

Time Mark Every 60 S









Bit Size (BS) (IN)	Tension (TENS) (LBF)	Shear Slowness (DTSM) (US/F)	Compressional Slowness (DTCO) (US/F)
6 ————— 16	0 ————— 5000	240 ————— 140	140 ————— 40

Gamma Ray (GR) (GAPI)	0 ————— 200
HILT Caliper (HCAL) (IN)	6 ————— 16
Poisson's Ratio (PR) (-----)	0 ————— 0.5

PIP SUMMARY

- ┆ Integrated Transit Time Minor Pip Every 1 MS
- ┆ Integrated Transit Time Major Pip Every 10 MS

Time Mark Every 60 S

Parameters

DLIS Name	Description	Value
BHS	HILTB-FTB: High resolution Integrated Logging Tool-DTS Borehole Status	CASED
BHS	HRLT-B: High Resolution Laterolog Array - E Borehole Status	CASED
BHS	MAPC-B: Multimode Array Sonic Power Cartridge Borehole Status	CASED
BS	Bit Size	12.250 IN
DLHS	Hole Diameter Source for SOBS Channel	AUTO
DTCO_SELECT	Delta-T Compressional Selection for DSTC	MF
DTF	Delta-T Fluid	204.5 US/F
DTSH_SELECT	Delta-T Shear Selection for DSTC	XD
ITTS	Integrated Transit Time Source	DTCO
ROTWINDOW_CTRL	Alford Rotation Window Control	ON
ROT_AI	Dipole Waveform Rotation Averaging Depth Interval	0 M
ROT_FIL LENG	Alford Rotation Filter Length	0
ROT_TWD	Alford Rotation Window Time Width	0 US
ROT_TWO	Alford Rotation Window Time Offset	0 US
ROT_XFH	Alford Rotation Filter High Cutoff	0 HZ
ROT_XFL	Alford Rotation Filter Low Cutoff	0 HZ
BHS	EDTC-B: Enhanced DTS Cartridge Borehole Status	CASED
BHS	HOLEV: Integrated Hole/Cement Volume Borehole Status	CASED
CSIZ	Current Casing Size	13.375 IN
CWEI	Casing Weight	54.50 LB/F
DO	Depth Offset for Playback	0.3 M
PP	Playback Processing	RECOMPUTE

Format: SONIC_D200 Vertical Scale: 1:200 Graphics File Created: 14-Mar-2008 11:32

OP System Version: 15C0-309

MCM

HILTB-FTB	SRPC-3546-Q1_2008_OP15	HRLT-B	SRPC-3546-Q1_2008_OP15
PPC1-B	SRPC-3546-Q1_2008_OP15	MAXS-B	SKK-3442-MAST
MAPC-B	SKK-3442-MAST	EDTC-B	SKK-3493-EDTCB
BSP-AH-169	SRPC-3546-Q1_2008_OP15		

Input DLIS Files

DEFAULT	Splice_TLD_MCFL_CNL_029CUP	FN:1	PRODUCER	14-Mar-2008 10:19	907.1 M	55.4 M
---------	----------------------------	------	----------	-------------------	---------	--------

Output DLIS Files

DEFAULT	TLD_MCFL_CNL_HRLA_032PUP	FN:52	PRODUCER	14-Mar-2008 11:32
REDUCED_DLIS	TLD_MCFL_CNL_HRLA_032PUP	FN:53	PRODUCER	14-Mar-2008 11:32